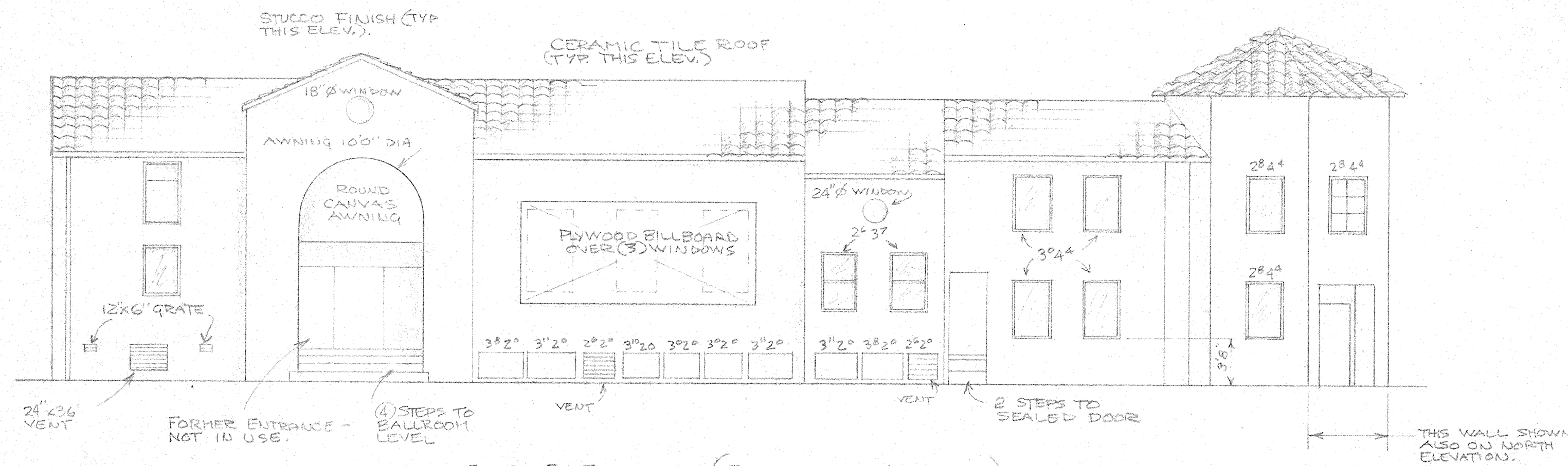
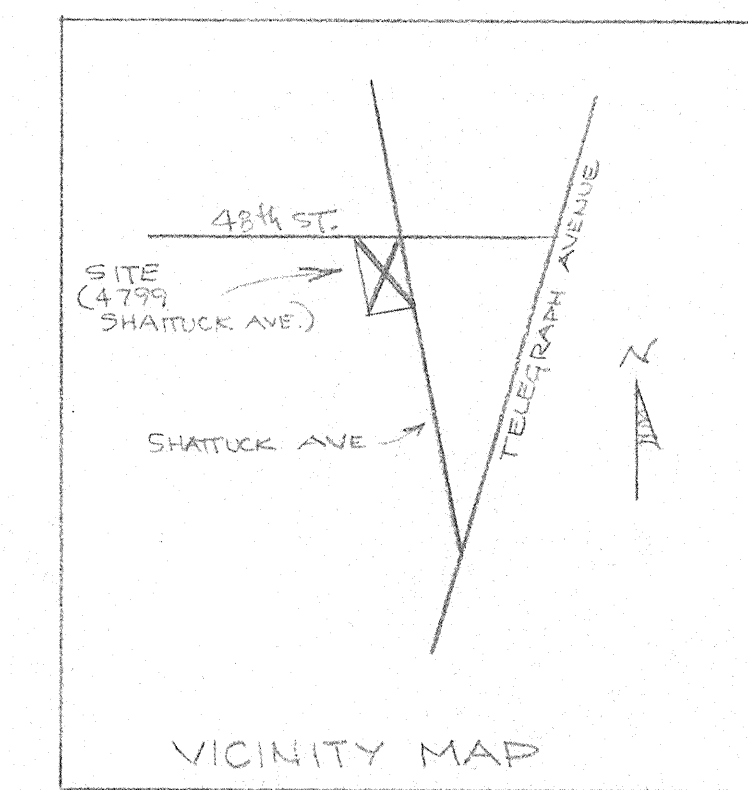
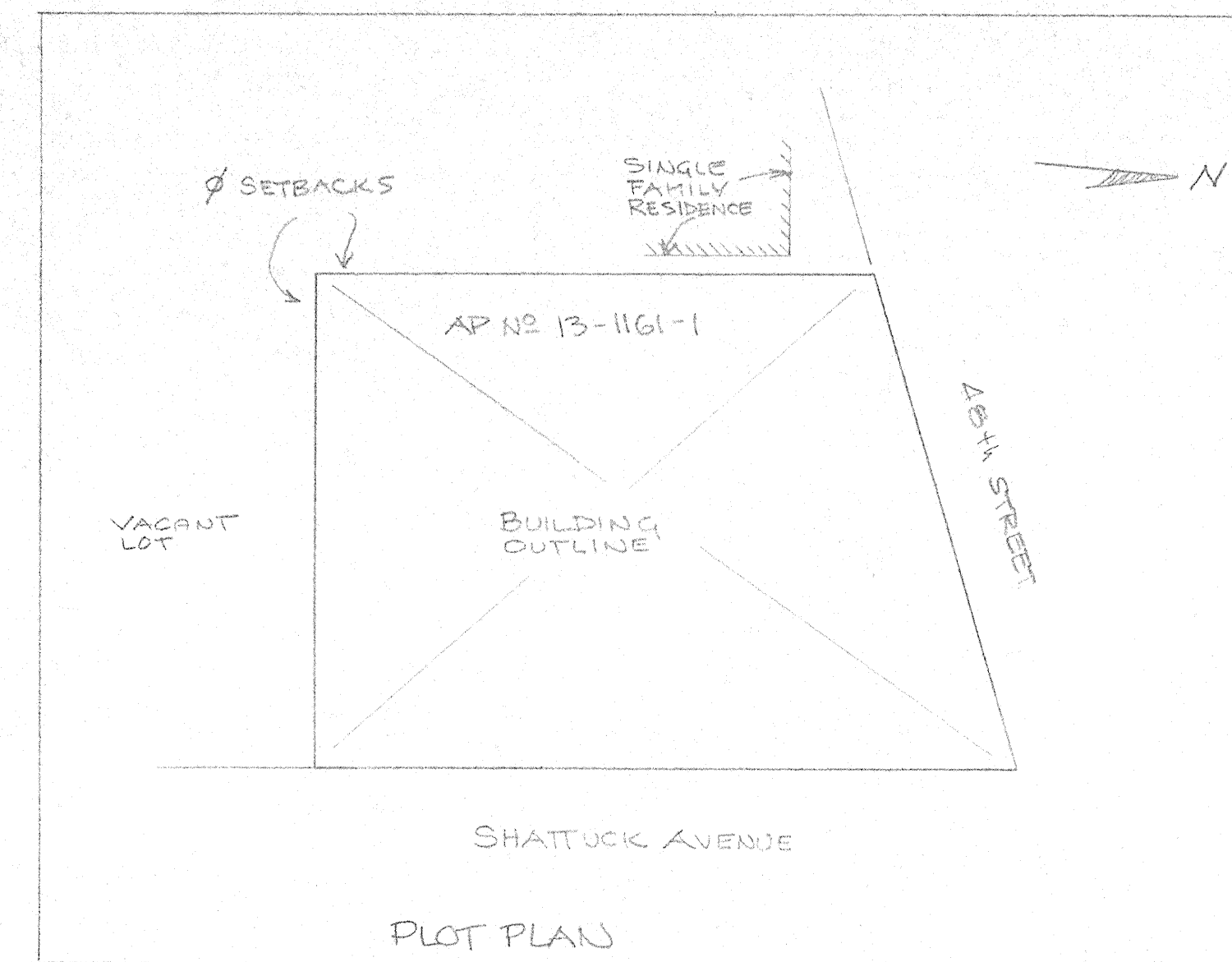


NORTH ELEVATION (48th STREET)  
SCALE: 1/8" = 1'-0"



EAST ELEVATION (SHATTUCK AVENUE)  
SCALE: 1/8" = 1'-0"

NOTES:

1. SOUTH & WEST ELEVATIONS HAVE NO DOORS OR WINDOWS.
2. PAVEMENT SLOPES TO WEST.
3. WINDOWS OPEN FOR VENTILATION ONLY, UNO.

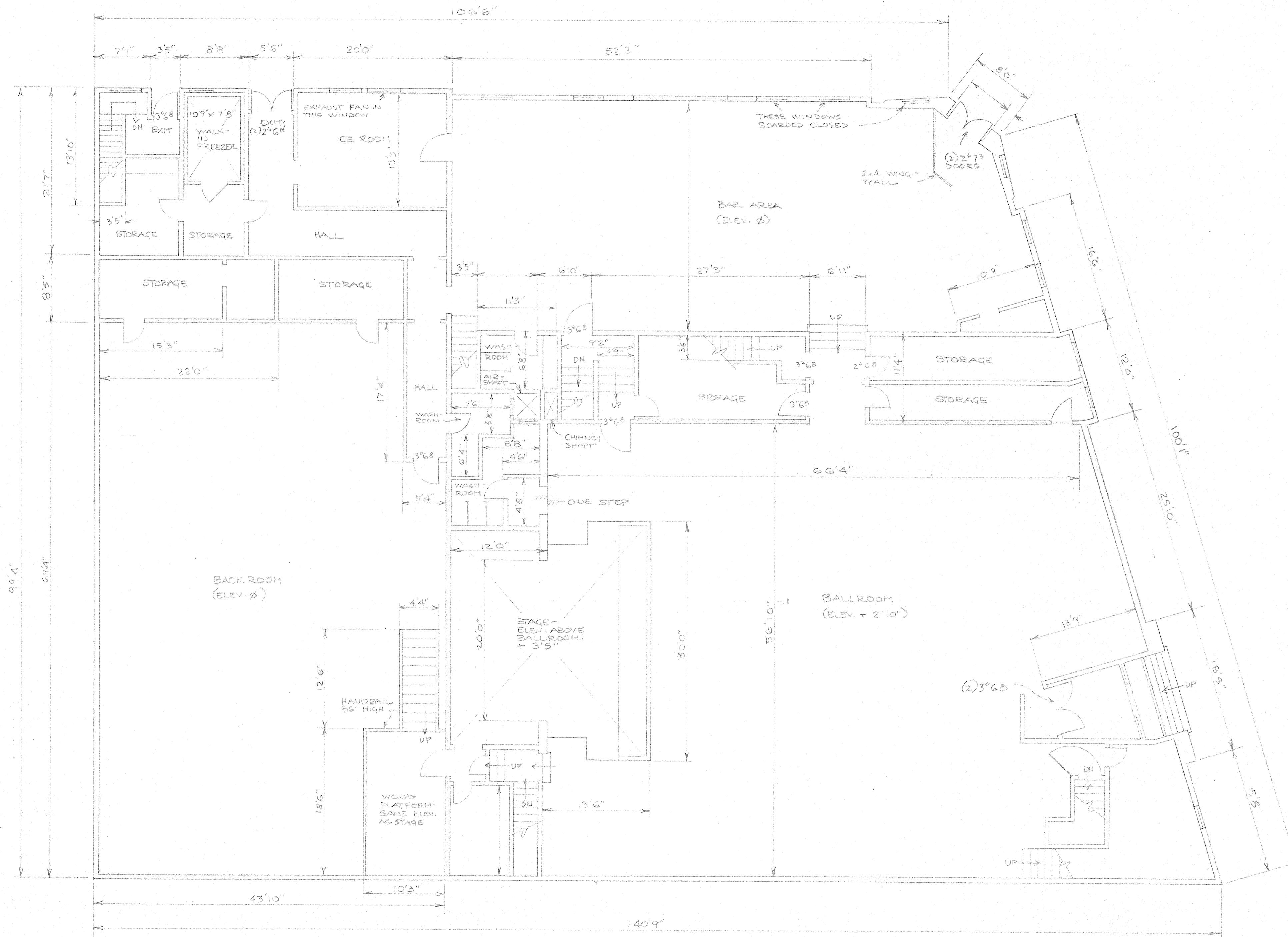
REVISIONS	BY

DRAWINGS BY  
ROD LAMKEY - DESIGN SERVICES  
(510) 644-4424

EXISTING CONDITIONS  
THE OMNI  
4799 SHATTUCK AVENUE  
OAKLAND, CA  
AP N2 13-1161-1

Date	1-11-96
Scale	AS NOTED
Drawn	Blanton
Job	OMNI
Sheet	1
Of 4	Sheets





NOTES:  
 EXTERIOR WALLS 2X6 MIN.  
 INTERIOR BEARING WALLS FOUNDATION TO ROOF 2X6 MIN.  
 INTERIOR WALLS 2X6 MIN. UNLESS NOTED OTHERWISE.  
 DOORS 2'0" UNLESS NOTED OTHERWISE.

MAIN FLOOR PLAN AT GROUND LEVEL, & BALLROOM  
 SCALE: 1/8"=1'-0"

REVISIONS	BY

DRAWINGS BY  
 ROD LAMKEY - DESIGN SERVICES  
 (510) 644-4424

EXISTING CONDITIONS  
 "THE OMNI"  
 4799 SHATTUCK AVENUE  
 OAKLAND, CA  
 APN 13-1161-1

Date 1-10-96  
 Scale AS NOTED  
 Drawn R. Lamkey  
 Job OMNI  
 Sheet 2  
 Of 4 Sheets



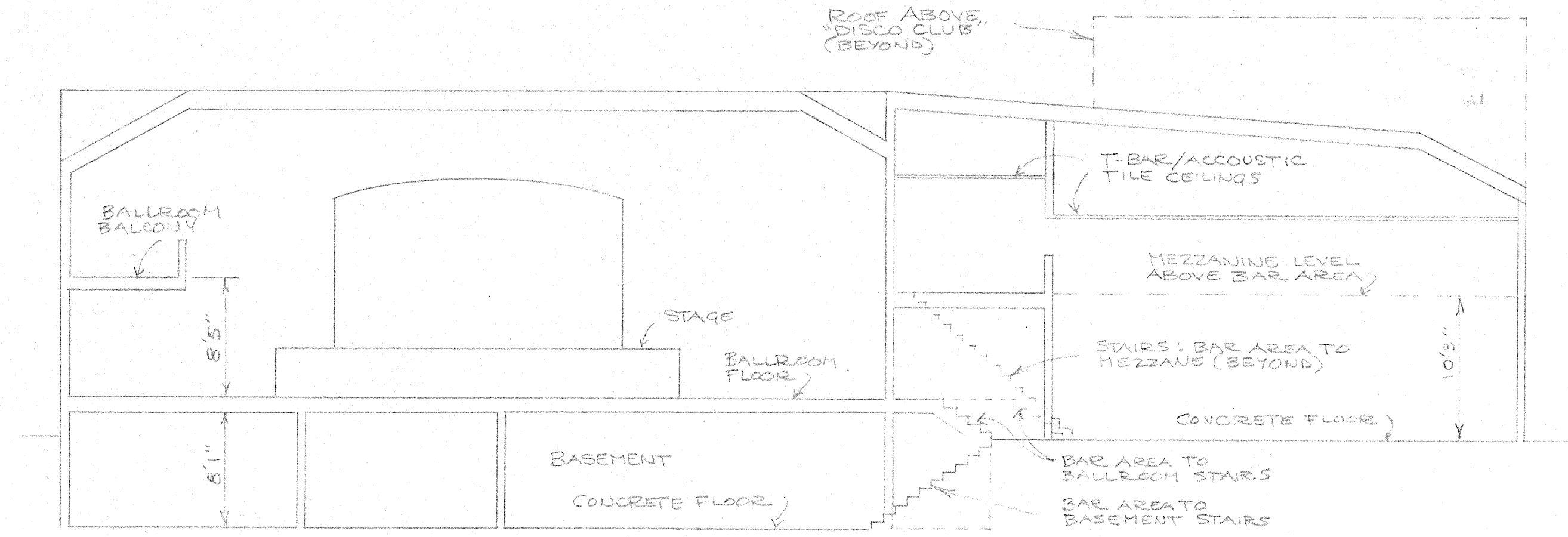


REVISIONS	BY

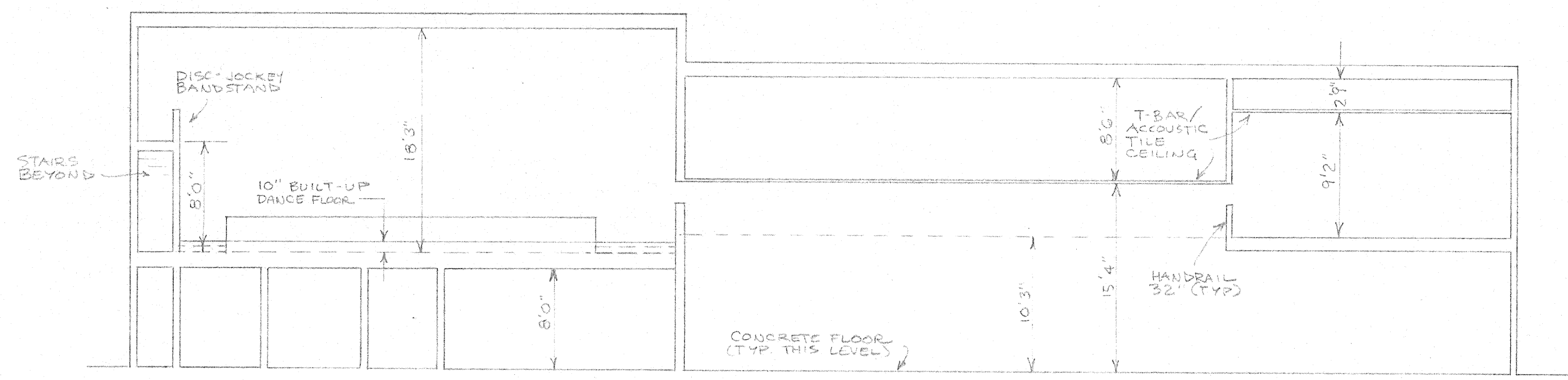
DRAWINGS BY  
 ROD LAMKEY - DESIGN SERVICES  
 (510) 644-4424

EXISTING CONDITIONS  
 "THE OMNI"  
 4799 SHATTUCK AVENUE  
 OAKLAND, CA  
 APN 13-11611-1

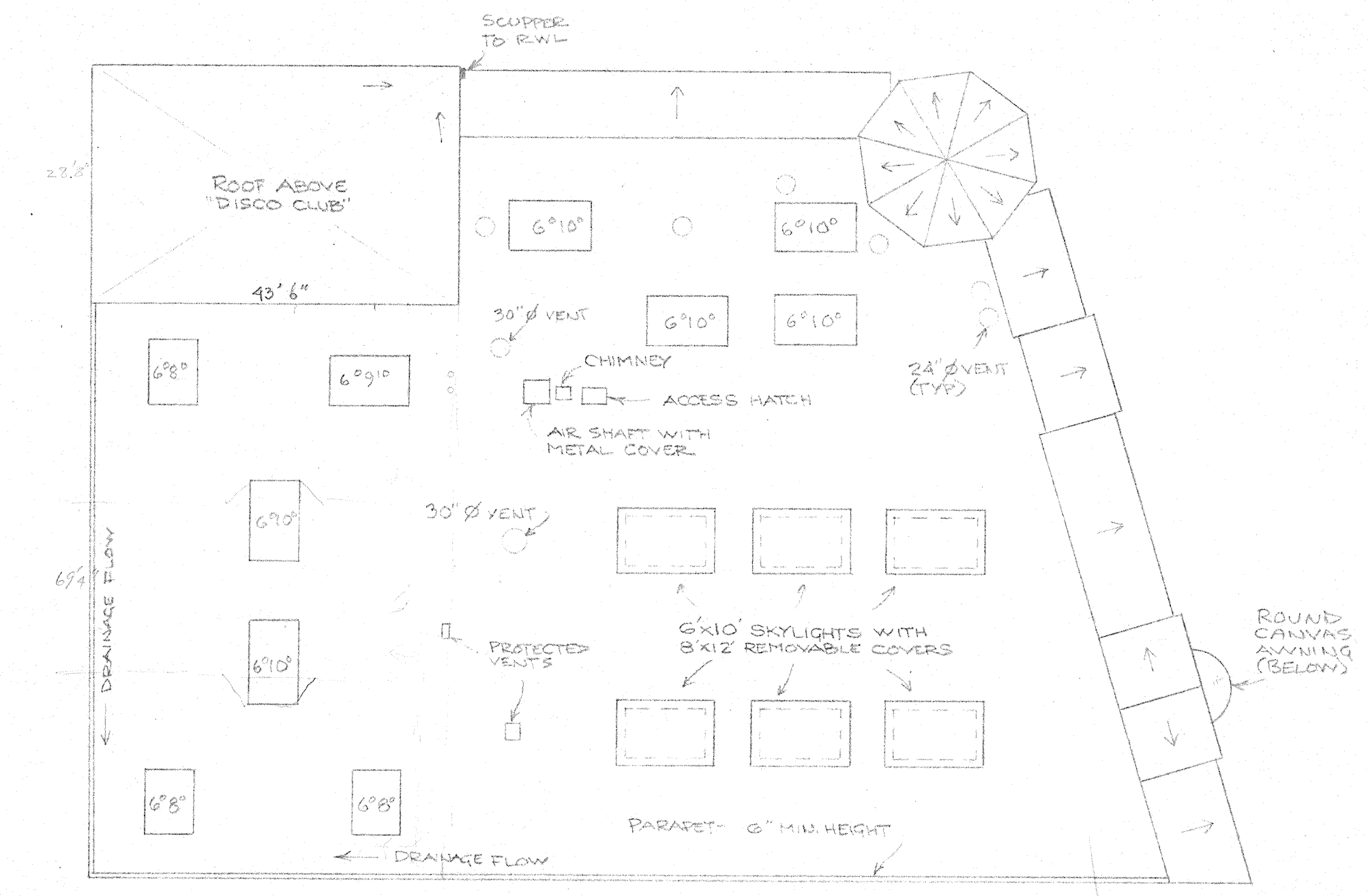
Date	1-8-93
Scale	AS NOTED
Drawn	D. Lamkey
Job	OMNI
Sheet	4
Of	4 Sheets



SECTION A-A  
 SCALE: 1/8" = 1'-0"

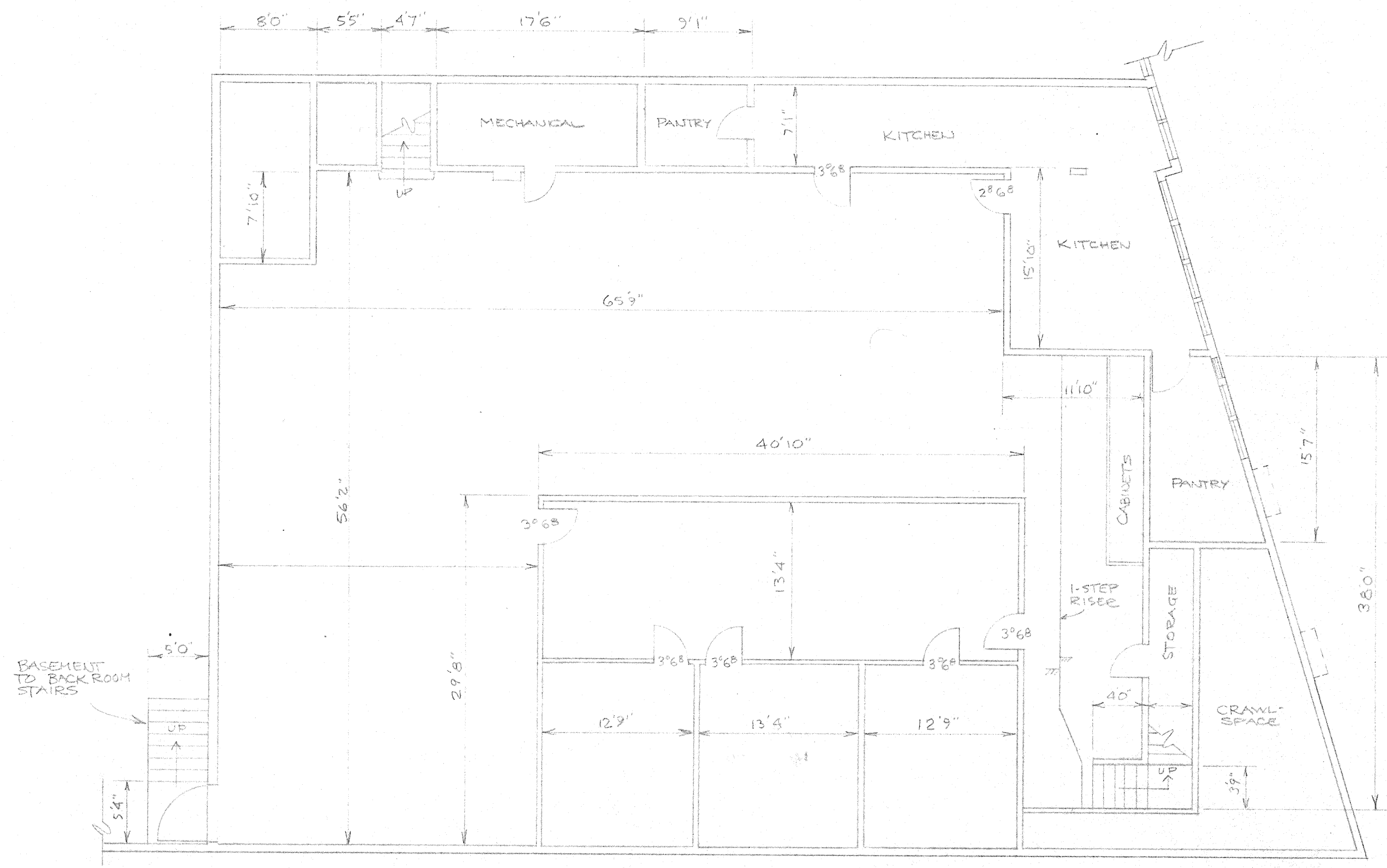


SECTION B-B  
 SCALE: 1/8" = 1'-0"

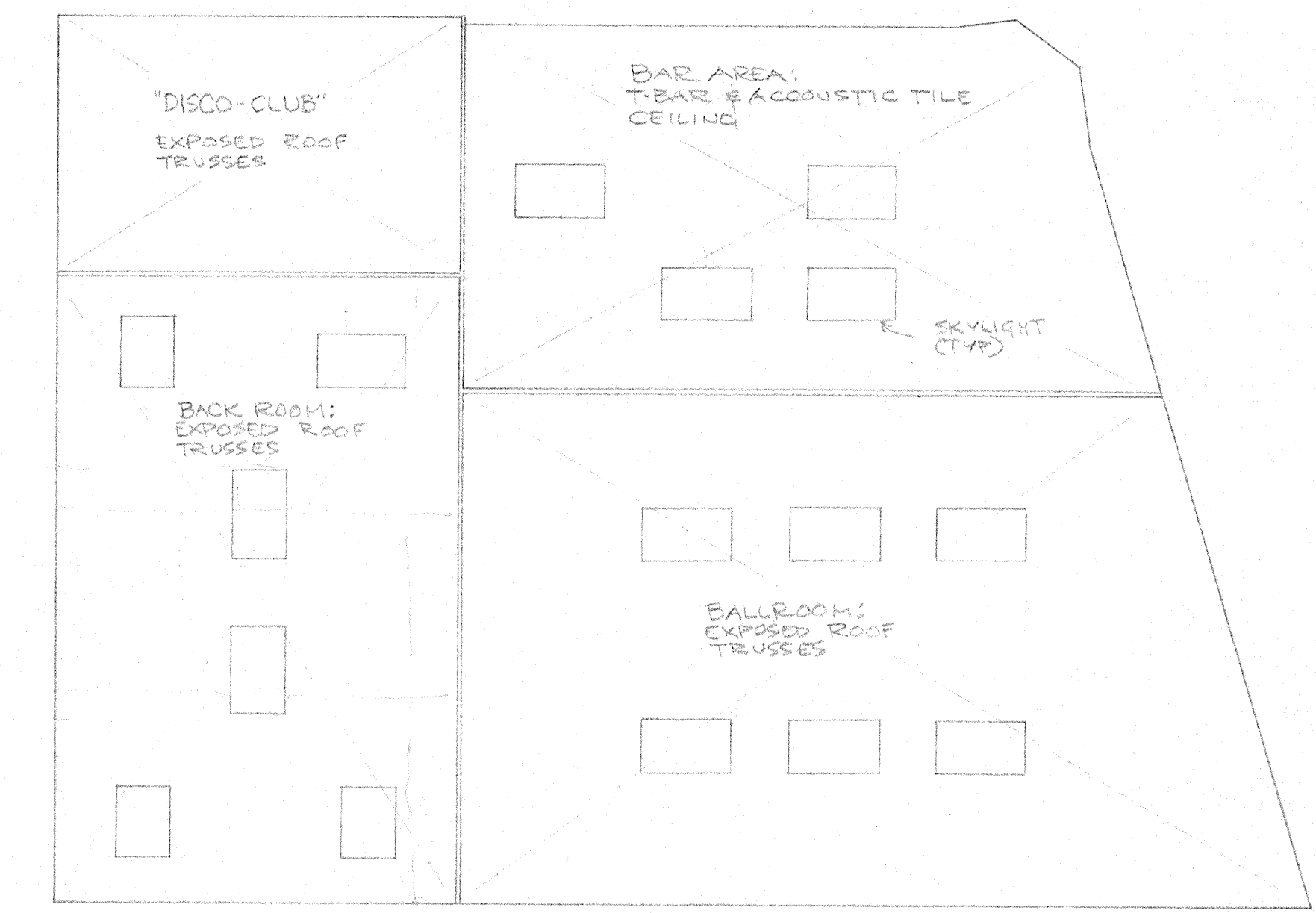


ROOF PLAN  
 SCALE: 1/16" = 1'-0"

900  
 450 NW  
 1350 NW  
 300 NW  
 300 NW  
 4250 NW



BASEMENT FLOOR PLAN  
 SCALE: 1/8" = 1'-0"



REFLECTED CEILING PLAN  
 SCALE: 1/16" = 1'-0"

NOTE: CEILINGS UNDER MEZZANINE & BALLROOM BALCONY SHEET ROCK OR LATH & PLASTER.  
 BASEMENT CEILING SHEET-ROCK OR LATH & PLASTER.